



Grades 1-3 Winners



Grades 4-6 Winners



Grades 7-8 Winners



CONGRATULATIONS

to Our Kids' Safety Poster Contest Winners!

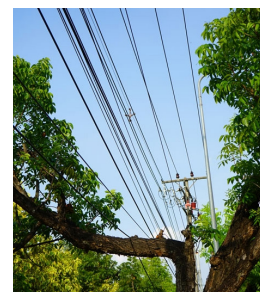
NPEI would like to thank and congratulate all the winners of the 2024 NPEI Kids' Safety Poster Contest! These students, in grades 1-8, submitted posters and were chosen by NPEI staff as the winners in each of the three age categories: Grades 1-3, 4-6, and 7-8.

Their posters centered on our theme to "Gear Up For Safety" and perfectly highlighted the importance of personal protective equipment for NPEI staff. Well done and thank you again to all of the students who entered our contest!

TREE trimming

When trees are close enough to potentially contact overhead power lines, public safety and the uninterrupted supply of electricity can be compromised. NPEI has a responsibility to ensure our electricity distribution system is safe and that it operates reliably. If you notice a tree that is interfering with our power lines or poses a hazard, please report it to 1-877-270-3938.

NEVER attempt to prune or cut down a tree near powerlines. A tree falling onto a powerline can cause serious injury or death. NPEI will be happy to connect you with a qualified and insured professional. For more information on Tree Trimming please visit www.npei.ca.



UNDERSTANDING YOUR ELECTRICITY BILL - Where does your money go?

Have you ever wondered where the money goes when you pay your electricity bill? We have created a short video to help educate our customers on the breakdown of an NPEI electricity bill, and show how every dollar that customers pay to NPEI for distribution is invested back into our communities. This ensures that your money stays local, where it matters most. Scan the QR code or visit www.npei.ca to watch the video and learn more!



Watch the video here!



WE ARE AVAILABLE BY TELEPHONE AND EMAIL MONDAY TO FRIDAY, 8:30AM TO 4:30PM, EXCLUDING HOLIDAYS. WE OFFER 24/7 SELF-SERVE OPTIONS FOR OUR CUSTOMERS THROUGH OUR MYACCOUNT CUSTOMER PORTAL. REGISTER TODAY BY SCANNING THE QR CODE OR AT WWW.MYACCOUNT.NPEI.CA. IN-PERSON VISITS ARE NOT AVAILABLE AT NPEI.



TO REPORT A POWER OUTAGE OR A FALLEN POWERLINE CALL OUR 24-HOUR EMERGENCY SERVICE:

1-877-270-3938

Summer/Fall

energy saving TIPS

1. Install weather stripping around your windows and doors to keep drafts out and maintain the temperatue of your house.
2. As the daylight hours begin to shorten, your use of lights will increase. Use LED lighting for the highest efficiency.
3. Now is the perfect time to change your air conditioner and furnace filters. This will help keep your units running more efficiently.
4. Wait until you have a full load of dishes or clothes to wash to save energy.
5. Use the bathroom fan when you take a shower or bath to remove heat and humidity from your home.

MOVING

WE CAN HELP SIMPLIFY YOUR MOVE



Whether you are looking to establish a new account with NPEI, move within our service territory or close your account, we are here to help. By using our MyAccount Customer Portal or our online forms, we have made moving easy for you! Landlords and property managers can also manage the electrical service for their rental properties.

We require notice of at least three business days in advance of any moves.

For more information or to access our online forms please visit www.npei.ca.

BEST OF LUCK to the NPEI Local Scholarship Program Recipients!

NPEI believes in the importance of supporting education and encouraging students to pursue a career in the electrical trades. Every year through our Local Scholarship Program we provide \$1,500 to students to continue their education in Electrical Engineering, Powerline Technician and related Business Programs.

This year through our scholarship program, nine students received a total of \$13,500, administered by Niagara Community Foundation to pursue their post-secondary education. Congratulations to all of these students!

- ✧ Claira Corkery - Westlane Secondary
 - ✧ Cole Traver - E.L Crossley Secondary
 - ✧ Daniel Charest - Saint-Jean-de-Brébeuf
 - ✧ Ethan Vercesi - A.N Myer Secondary
 - ✧ Kade Martin - Stamford Collegiate
- ✧ Matthew Thompson - West Niagara Secondary
 - ✧ Nick Cervantes - Saint Paul Catholic
 - ✧ Owen MacDonald - Blessed Trinity Catholic
 - ✧ Ryan Franco - Saint Michael Catholic

LUCKY THE SQUIRREL'S SAFETY QUIZ

Test your safety knowledge and answer these questions!

- 1) When undertaking outdoor activities – such as standing on a ladder, cleaning windows or eaves, climbing or trimming trees – how close do you believe you can safely come to an overhead power line with your body or an object?
- 2) How close do you believe you can safely come to a downed overhead powerline, such as a downed line caused by a storm or accident?
- 3) If you were in a vehicle – such as a car, bus, or truck – and an overhead powerline came down on top of it, what do you think the appropriate action would be?

Answers:

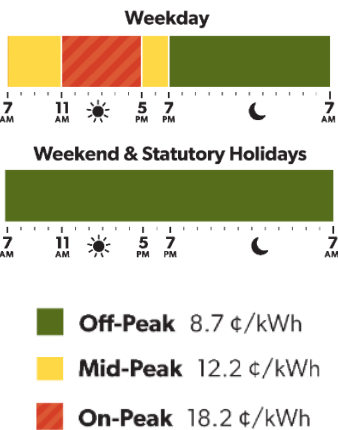
- 1) Three metres away from overhead powerlines
- 2) Ten metres, or the length of a school bus, away from downed powerlines
- 3) Stay in the vehicle until the power has been disconnected



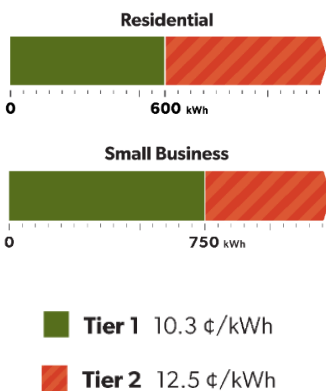
CURRENT ELECTRICITY RATES

The Ontario Energy Board (OEB) sets the rates that NPEI charges for the electricity you use in your home or small business. Summer electricity rates began on May 1, 2024 and will be in place until October 31, 2024. With Time-of-Use (TOU) and Ultra-Low Overnight (ULO) rates, the price depends on when you use electricity. With Tiered rates, the price depends on how much electricity you use overall in a month. Customers can choose the rate plan that best suits their household energy needs by completing the customer election form in the MyAccount Customer Portal or at www.npei.ca. Below are the current electricity rates.

Time-of-Use



Tiered



Ultra-Low Overnight

